



Email us today:  
info@pentestpartners.com

# Papa – Installation and Prerequisites

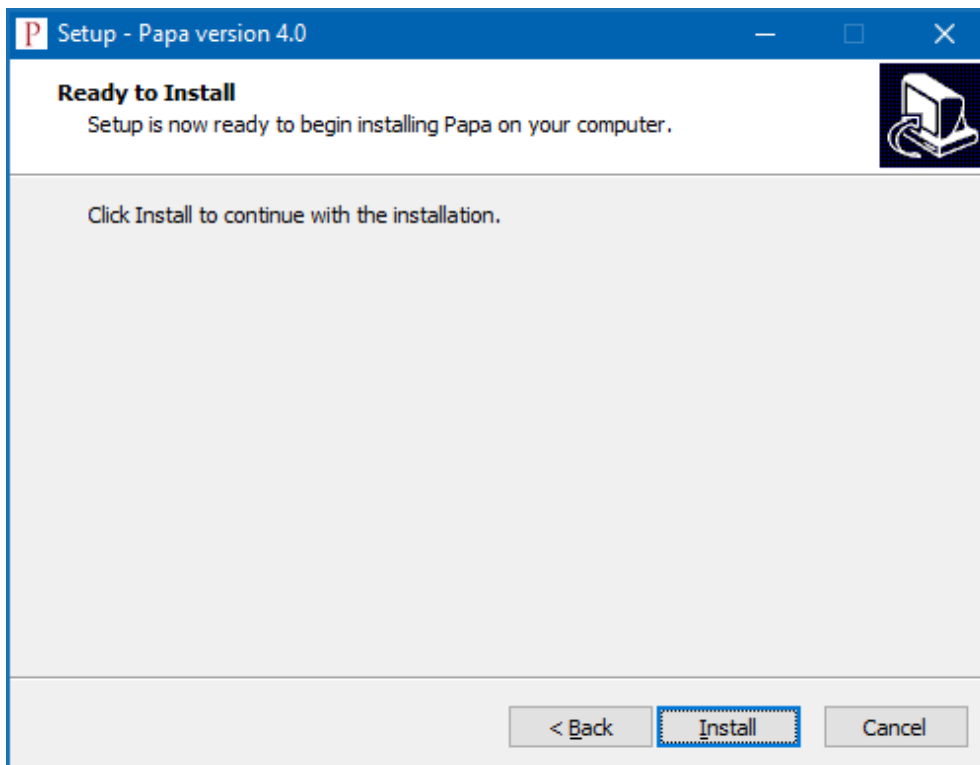
## PTP Advanced Password Auditor

### Papa Installation

Papa can be installed on any Windows-based machine that can connect to an on-prem domain controller. The machine does not need to be part of the same domain.

Papa comes with a standard installer – PapaSetup.exe. This will install Papa on the machine and create the following folders:

- Program Files (x86)\PTP-Labs – for the Papa program files
- Documents\PTP-Labs\Papa – for the encrypted database



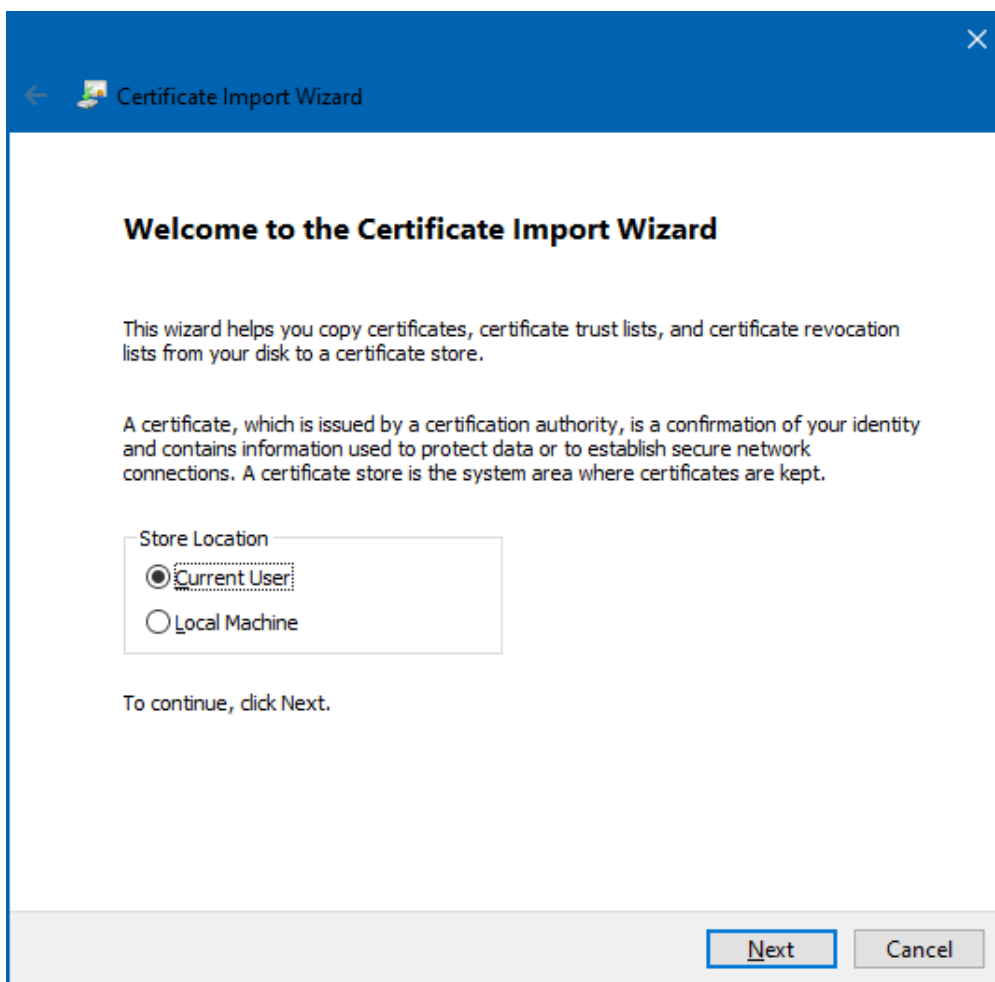
System requirements are: 4GB RAM, 200MB of free storage and at least .NET version 4.7.2 installed to run Papa.



### Licence Certificate Installation

Your Papa licence provides access to our password cracking servers. This is managed through the provided client certificate. This can be installed by double clicking on the certificate file (.p12) and accepting all the default options. The file is password protected and you'll be prompted for that during the installation.

We offer two types of client licence – one where the cracked passwords are visible, and one where they are hidden. The latter can be useful for IT support personnel who may be required to manage password resets for users with weak passwords, but knowledge of the actual password is not necessary.



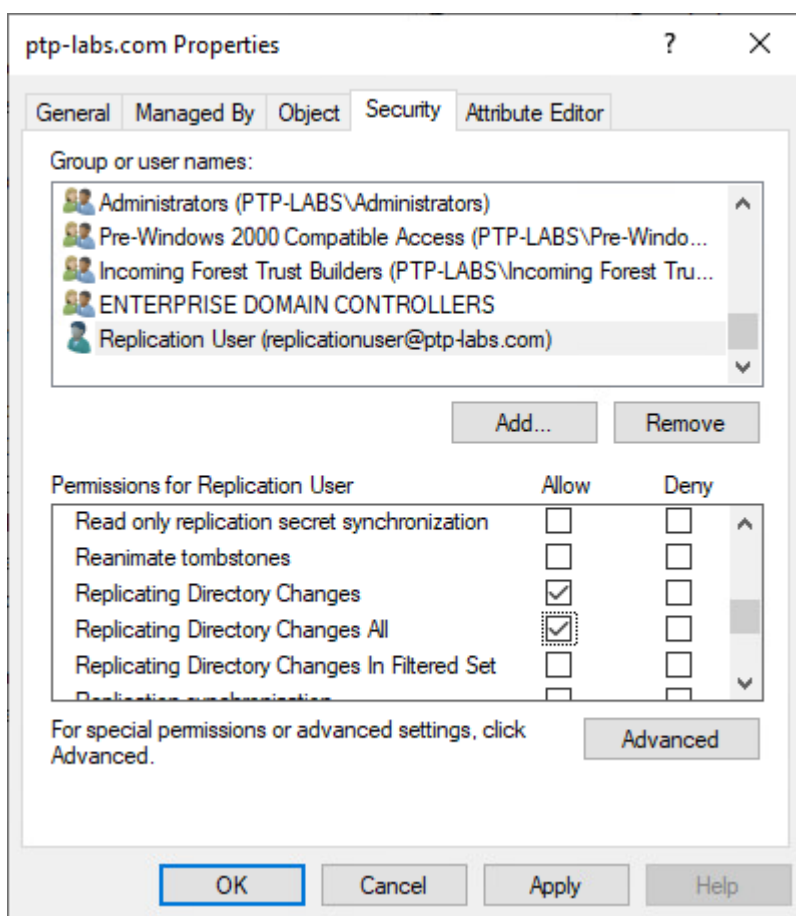


### Domain Account Setup

Papa needs an account with the following permissions to retrieve hashes from the domain:

- Replicating Directory Changes
- Replicating Directory Changes All

Domain administrators have this permission by default, or if preferable, an account with only these permissions can be created for exclusive Papa use.

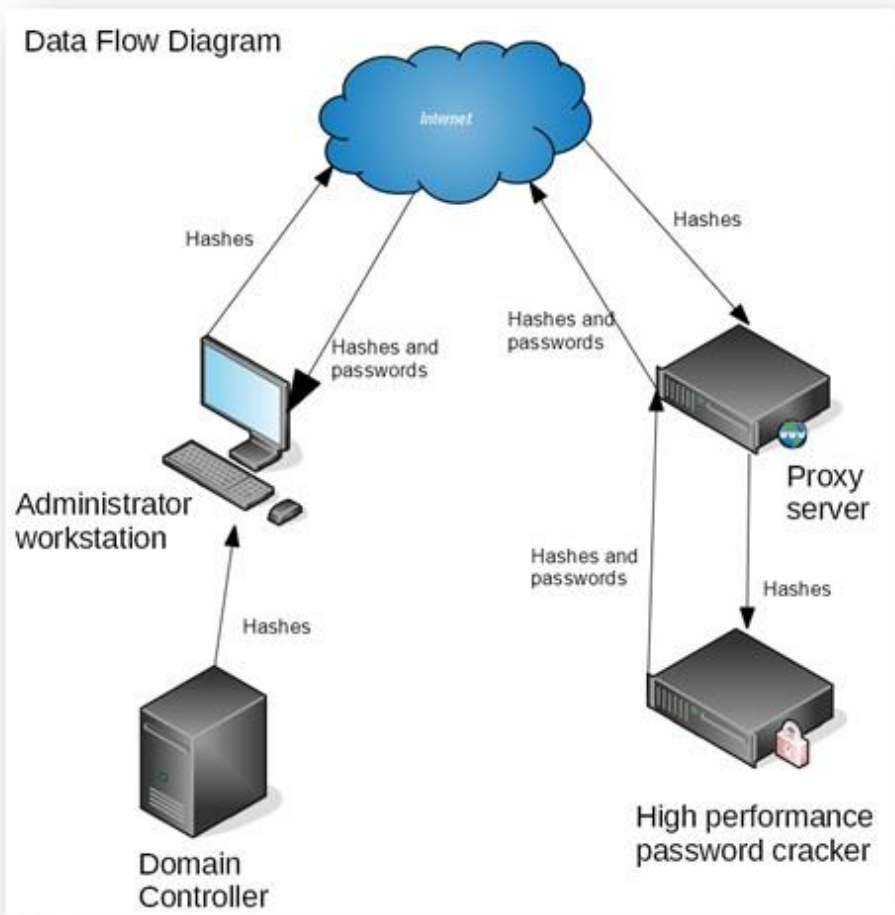


The Papa tool can also be used to force a password reset on users with weak passwords, or to update the password expiry information. If a Papa user is created with the limited permissions above, then it may be desirable to delegate password reset permissions to this user too.



### Data Flow

The diagram below gives an overview of how the hashes are transmitted by Papa.



### Outbound Network Connections

Papa needs to establish a connection to proxy.ptp-labs.com on port 443/TCP. We need a clean uninterrupted connection. If you use an SSL proxy of some kind, Papa won't connect. We don't want the hashes being intercepted by anyone. It is possible that an exception for the PTP-Labs proxy may be required on your filtering proxy.

### Inbound Network Connections

The Papa server requires access to several ports on the Domain Controller in line with [Microsoft best practises](#).



### First Use

The first time Papa is run, it'll ask for a new password to be created. This password is used to encrypt the local database where a copy of the hashes and cracked passwords are stored, so it's important this is a strong password.

We recommend using a password manager to generate a random password using a mix of character types. Papa integrates with password managers which use the clipboard and will check the clipboard for a valid password to unlock the database on subsequent use.

PEN TEST PARTNERS  
Advanced Password Auditor

Please enter a new password to encrypt the databases

Please confirm

Encrypt New Database

Password should be at least 14 characters  
Password should contain a mix of character types  
Passwords should match

### Support?

Of course - we're here to help and love talking about Papa. Please email us at [papa@pentestpartners.com](mailto:papa@pentestpartners.com) if we can help, or you would simply like to chat about how you can use Papa. We're always open to suggestions, so if you think Papa could be improved in some way, we'd love to hear from you.

Thank you

